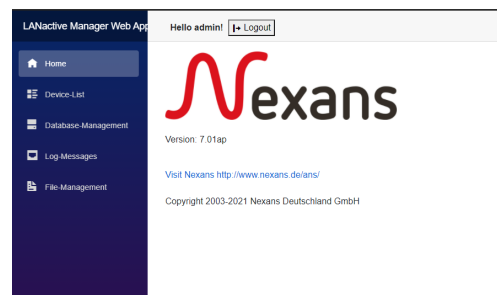


## LANactive Management Software

- Management Software for all LANactive switches
- Zero-Touch Configuration
- Web interface
- Extensive diagnostic functionality
- Secure communication between software, switches and clients



## Application

Nexans LANactive Manager is a centralized software solution to configure, manage and supervise Nexans LANactive switches. The software provides an easy and comfortable way for the operation of all LANactive FTTO and LANactive Industry switches.

In case of troubleshooting LANactive Manager provides an extensive setup of information and tools to decrease the debugging time.

### Stand-Alone and Controller Version

Nexans LANactive Manager is available in two software packages: as local desktop installation for single user or as central server application with a web based frontend and multiple and simultaneous user access.

### Zero-Touch Configuration

Nexans LANactive Zero-Touch Configuration is part of the LANactive Manager in combination with the controller license and is a contemporary way of designing, building and operating networks with minimum effort. The use of LANactive switches in combination with the LANactive Manager ensures networks are fully automated, flexible and scalable.

After connecting a Nexans LANactive switch to a network segment, the switch will automatically link to its controller to receive provisioned firmware and configuration.

### Fully Automated Operation

Next to the Zero-Touch Configuration feature, LANactive Manager provides several fully automated tasks e.g. a scheduled configuration or firmware update for all or dedicated devices, a Master-Configuration option or Autodiscovery functionality.

### Increased Security

LANactive Manager uses only encrypted and secured communication with the connected LANactive switches to increase the security level and avoid unwanted access to data.

### Test Version for Evaluation

LANactive Manager can be downloaded free of charge for evaluation purposes. Compared to the licensed version, the following restrictions apply:

- Delayed starting screen for registration key request
- Maximum five switches can be saved in a database

### Support Portal

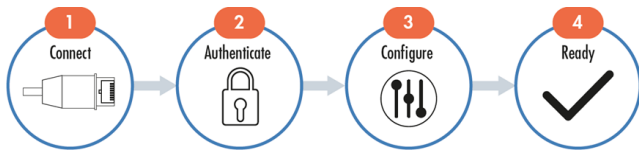
The LANactive Manager documentation can be loaded via help menu as a PDF file or at the Nexans ANS Support Portal.

Please visit Nexans ANS Support Portal at:

<https://www.nexans-ans.de/support/>

**LANactive**  
Switch to the future

## Controller Features



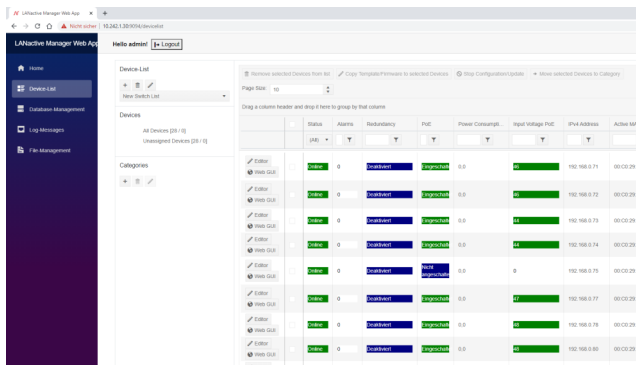
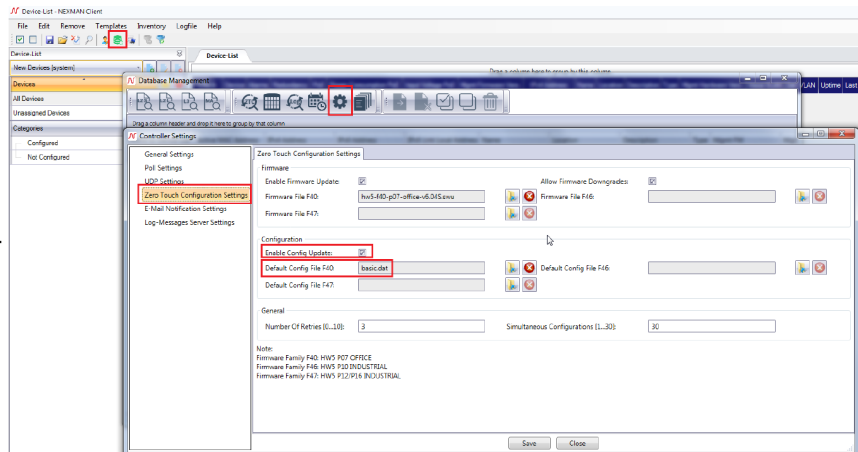
### Zero-Touch Configuration

Zero-Touch Configuration is a process to automate the remote configuration of LANactive switches. Time-consuming pre-configuration of switches is obsolete.

After installation and powering on a LANactive switch the switch contacts automatically the LANactive Manager to receive a firmware update if necessary and a default or pre-defined switch configuration.

Zero-Touch Configuration is part of the LANactive Manager in combination with the controller license.

Zero-Touch Configuration is working only in combination with LANactive switches hardware version V5 or HW5 with a minimum firmware version of firmware version V6.xx.



### Web based user interface

The web based user access allows technicians and administrators to connect from each end device to the LANactive Manager interface using a standard browser. Therefore, the LANactive Manager must be installed as the controller instance including a controller license. HTTP and or HTTPS can be used to access LANactive Manager depending on the desired security level.

## Feature Availability

Feature	Stand-Alone	Controller
Remote configuration of all Nexans LANactive switches	Yes	Yes
Web interface (http and https)	No	Yes
Zero-Touch Configuration support	No	Yes
Extended device list with individual sorting parameters	Yes	Yes
Extensive remote diagnostic and monitoring	Yes	Yes
Time scheduled configuration and firmware update	No	Yes
Layer-2 and Layer-3 Autodiscovery feature	Yes	Yes
Master configuration templates	Yes	Yes
History function for old device configuration	Yes	Yes
Comprehensive system logging	Yes	Yes
Dashboard with Network Information	No	Yes
Syslog and SNMP Server	No	Yes
Sophisticated user management with different access levels, roles and user specified device lists	No	Yes
Detailed assignment of user rights up to the port level	No	Yes
Device lists with multiple user access	No	Yes
SQL Database containing all information	No	Yes
Extended import and export function (XML, CSV or Excel format)	Yes	Yes
Client authentication via RADIUS and Active Directory (LDAP)	No	Yes
Operating system	Windows only	Windows and Linux

## Ordering Information

Article Number	Description
88301908	LANactive Manager Single User Licence
88301909	LANactive Manager Company Licence
88301920	LANactive Manager Controller Licence

## Screenshots

The screenshots display the LANactive Manager interface, which is used for managing network devices. The main window shows a 'Device-List' with columns for device status, alarms, redundancy, power consumption, and network parameters. A tree view on the left organizes devices by building and floor.

Below the main device list, there are detailed configuration windows for specific devices, such as 'Global-Link State' and 'Port Link State'. These windows show various settings like MAC-security, PoE state, and port configurations.

The 'User Management' window shows a table of users with columns for Actions, First Name, Last Name, Username, Date Created, Created By, Roles, and Device Editor Pa. The 'Edit User' window allows for creating or modifying user profiles, including roles and assigned device lists.

Check	Device	Alarms	Redundancy	PoE	Power Consumption PoE	Input Voltage PoE	IPV4 Address	Active MAC Address	Name	Location	Description	Type	Mgmt Firmware Vers.	Mgmt Hardware Vers.
■	Switch 0	0	0 Port(s) bl...	Po...	6.4	54	192.168.0.3	00:C0:29:29:3A:43	SW...	Room...	GigaSwit...	74	HW5-F40-P07-OFFI...	5.10
■	Switch 0	0	Disabled	Po...	0.0	54	192.168.0.1	00:C0:29:28:D1:04	ASC...	ASC	GigaSwit...	70	HW3-ENHANCED...	3.20
■	Switch 0	0	0 Port(s) bl...	No...	0.0	0	192.168.0.4	00:C0:29:25:D0:BB	SW...	not defi...	iSwitch G...	36	HW3-F22-P10-IND...	3.04
■	Switch 0	0	Disabled	Po...	0.0	48	192.168.0.83	00:C0:29:25:81:0D	not...	not defi...	GigaSwit...	63	HW3-F21-P06-OFFI...	3.20
■	Switch 0	0	Disabled	Po...	0.0	48	192.168.0.86	00:C0:29:25:80:80	not...	not defi...	GigaSwit...	63	HW3-F21-P06-OFFI...	3.20
■	Switch 0	0	Disabled	Po...	0.0	47	192.168.0.84	00:C0:29:25:75:A3	not...	not defi...	GigaSwit...	62	HW3-F21-P06-OFFI...	3.20
■	Switch 0	0	Disabled	Po...	0.0	48	192.168.0.85	00:C0:29:25:75:0D	not...	not defi...	GigaSwit...	62	HW3-F21-P06-OFFI...	3.20
■	Switch 0	0	Disabled	Po...	0.0	48	192.168.0.82	00:C0:29:25:75:04	not...	not defi...	GigaSwit...	62	HW3-F21-P06-OFFI...	3.20
■	Switch 0	0	Disabled	No...	0.0	0	192.168.0.78	00:C0:29:25:47:F5	not...	not defi...	GigaSwit...	61	HW3-F21-P06-OFFI...	3.10
■	Switch 0	0	Disabled	No...	0.0	0	192.168.0.80	00:C0:29:25:47:CE	not...	not defi...	GigaSwit...	61	HW3-F21-P06-OFFI...	3.10
■	Switch 0	0	Disabled	Po...	0.0	47	192.168.0.75	00:C0:29:25:2A:BB	not...	not defi...	GigaSwit...	60	HW3-F21-P06-OFFI...	3.10
■	Switch 0	0	Disabled	Po...	0.0	47	192.168.0.74	00:C0:29:25:0C:1A	not...	not defi...	GigaSwit...	60	HW3-F21-P06-OFFI...	3.10
■	Switch 0	0	Disabled	Po...	0.0	47	192.168.0.72	00:C0:29:25:0C:17	not...	not defi...	GigaSwit...	60	HW3-F21-P06-OFFI...	3.10
■	Switch 0	0	Disabled	Po...	0.0	47	192.168.0.71	00:C0:29:25:02:89	not...	not defi...	GigaSwit...	60	HW3-F21-P06-OFFI...	3.10
■	Switch 0	0	Disabled	Po...	0.0	47	192.168.0.73	00:C0:29:24:FA:86	not...	not defi...	GigaSwit...	60	HW3-F21-P06-OFFI...	3.10