

#smartconnection



LANactive Fibre To The Office

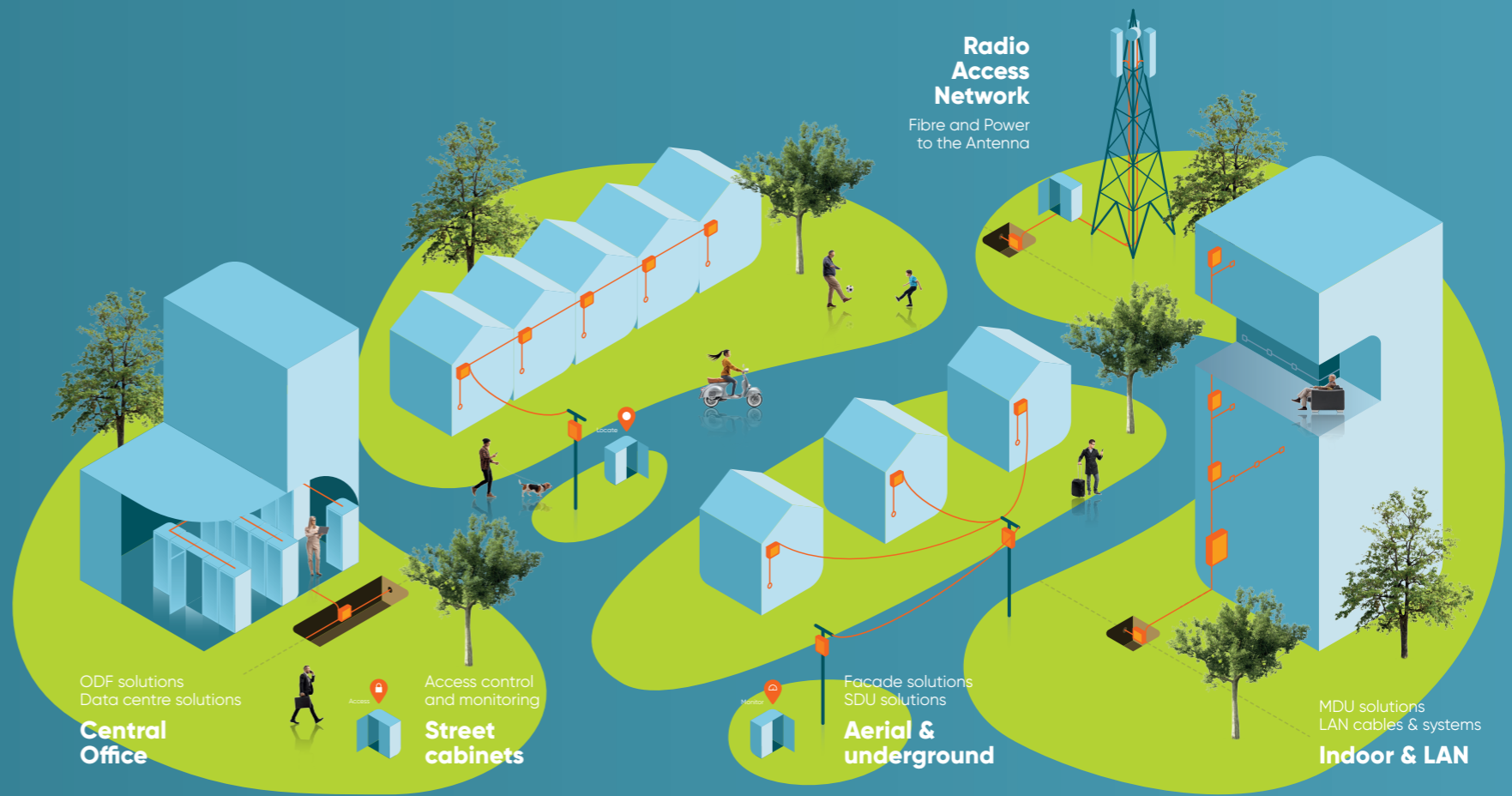
Catalogue

www.aginode.net



Table of content

Make #smartconnections with Aginode	3
Challenges with traditional LAN	4
Fibre To The Office - Simplify your network	5
Intelligent and robust switches	6
LANactive FTTO & DICE	8
LANactive Manager	9
Product overview	10
• GigaSwitch V5 54V DC	10
• GigaSwitch V5 230V AC	11
• YGigaSwitch V6 54V DC	11
• GigaSwitch V5 MED	12
• GigaSwitch V5 IND	13
• LANactive PoE++ Head	14
• Click-In Power Supplies	14
• Installation Power Supplies	15
• LANactive Manager	16
• Memory Cards, USB Console Cable	16
• Aginode SFPs	17
• Cover sets, Installation profile	18
• Installation profile, Mounting Kit	18



Make #smartconnections with Aginode.

Aginode, formerly Nexans Telecom Systems, designs & manufactures connectivity solutions for digital networks in FTTx, Mobile, LAN & Data Centre markets. Our goal: to enable the infrastructure which delivers applications that make lives more connected, productive, and enjoyable; today and in future.

Our international teams have over 30 years proven track record of developing, implementing, and servicing advanced infrastructure solutions, with Aginode's diverse product range under our brand names:

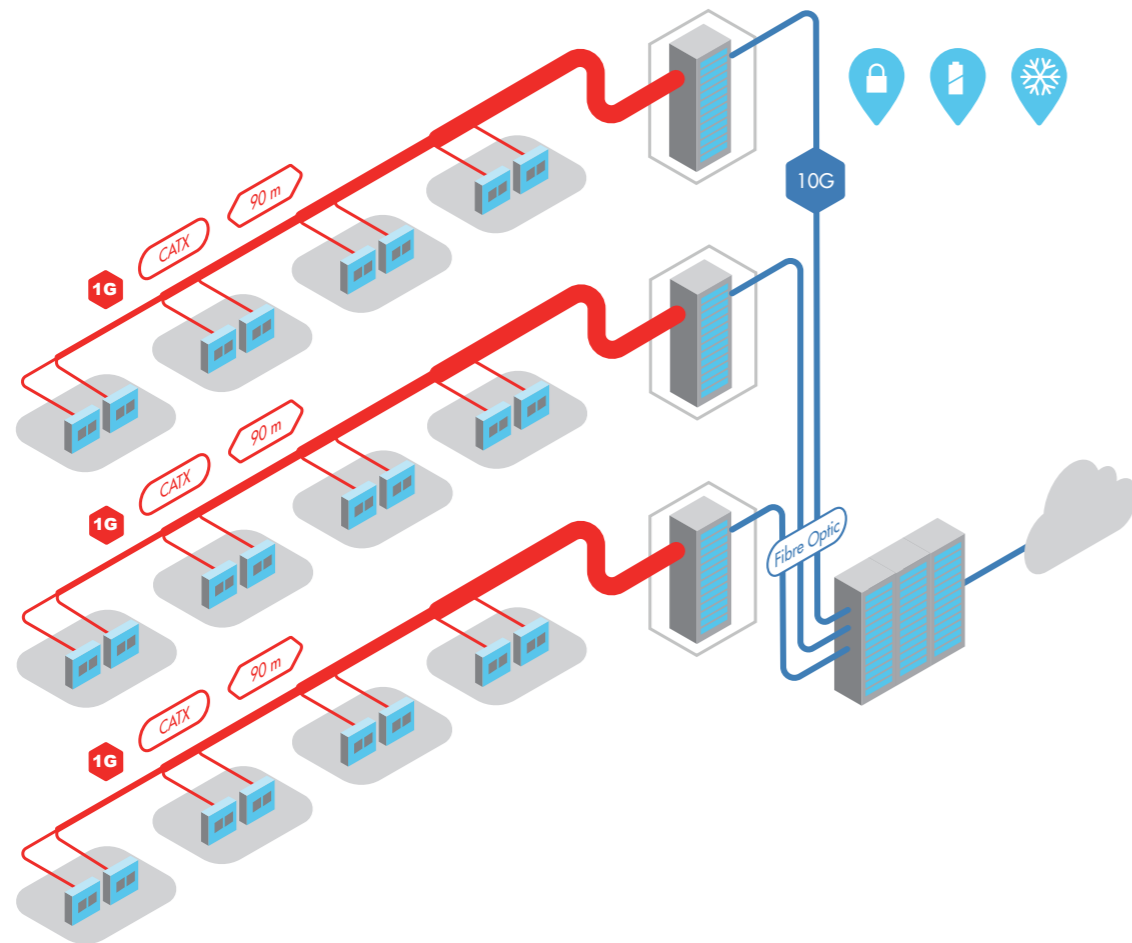
- **LAN & Data Centres:** LANmark™, LANsense™, LANactive
- **FTTx & Mobile:** XPLOER™, BRIGHTBOX™, INFRABIRD™, UPSKY™

With a state-of-the-art industrial footprint and recognised technological know-how in Europe, Middle East, North-West Africa, and Asia, Aginode is a key player in digitalisation and connectivity.

Challenges with traditional LAN

From complexity to flexibility

The number of applications running on networks keeps increasing each year. Server virtualisation, cloud computing, IP telephony, IPTV, security services, video conferencing and more require higher bandwidth, signal continuity and network scalability. IP convergence is also boosting the need for lasting infrastructures. However, when trying to keep up with today's network evolution and projected future developments, IT managers face several challenges.



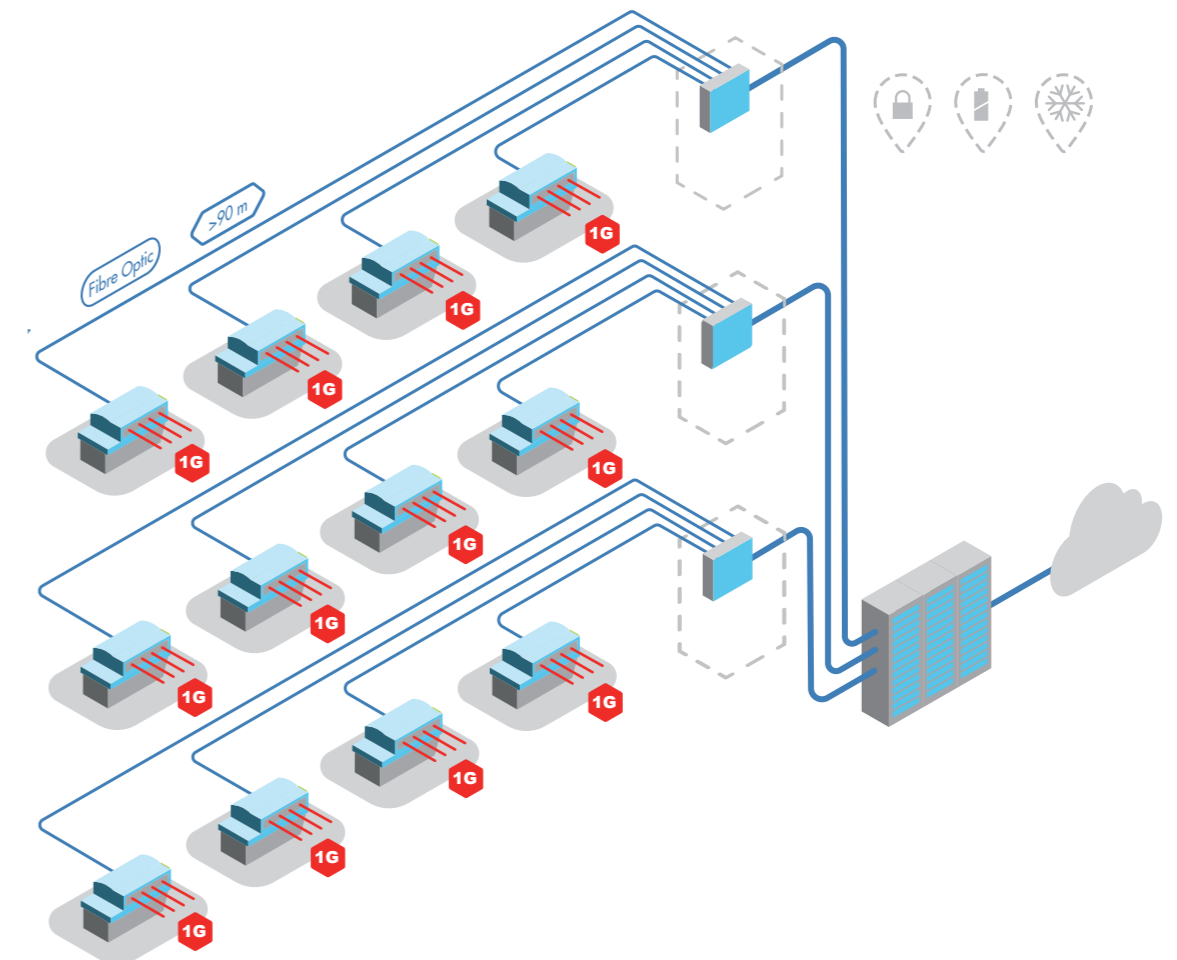
Fibre To The Office

Simplify your network

Aginode LANActive is an alternative LAN technology for use in office environments. Passive fibre cabling and active switches are combined to provide Gigabit Ethernet services from the central core switch to an FTTO switch and from there to end user devices. Although the entire network operates at 1 Gbps, throughput is as good as – or better than – that of a traditional network setup featuring floor distributors and an aggregated high-speed backbone. Performance is further supported by non-blocking switching and switches with 20 Gbps backplane.

LANActive switches ensure intelligent conversion from fibre to copper and vice versa. Each switch, installed at the workplace in cable ducts or floor boxes, is equipped with four copper RJ45 user ports to feed end user devices with data and power. Fibre speed, reliability and long distance coverage are coupled with the Ethernet benefits of copper. This solution meets current and foreseeable network requirements in terms of flexibility, cost efficiency and network interoperability. Regardless of their size and complexity, networks can be easily and cost-efficiently managed from a single location with the LANActive configuration and management platform from Aginode. Precise mapping of current infrastructure status makes it possible to track and repair faults or configuration errors fast, saving considerable time.

- Easy and fast to install, adjust and repair
- Avoiding floor distributors to save space, costs and energy
- Minimal cable volume and equipment footprint
- Highly scalable and flexible
- Increased protection of investments



Intelligent and robust switches

Easy to install

Compact, discreet FTTO switches are installed in cable ducts or floor boxes. Despite their small form factor, the switches offer up to four copper RJ45 user ports for delivering data and power to end user devices. As this is delivered over a relatively short distance – the last few metres of the network – there is less power loss and less energy required.

Easy Configuration

Optional memory cards with MAC addresses always store the latest full switch configuration automatically. If a switch needs to be replaced, all you need to do is remove the memory card and insert it into the new switch. No special knowledge or training required.

Enhanced Energy Efficiency

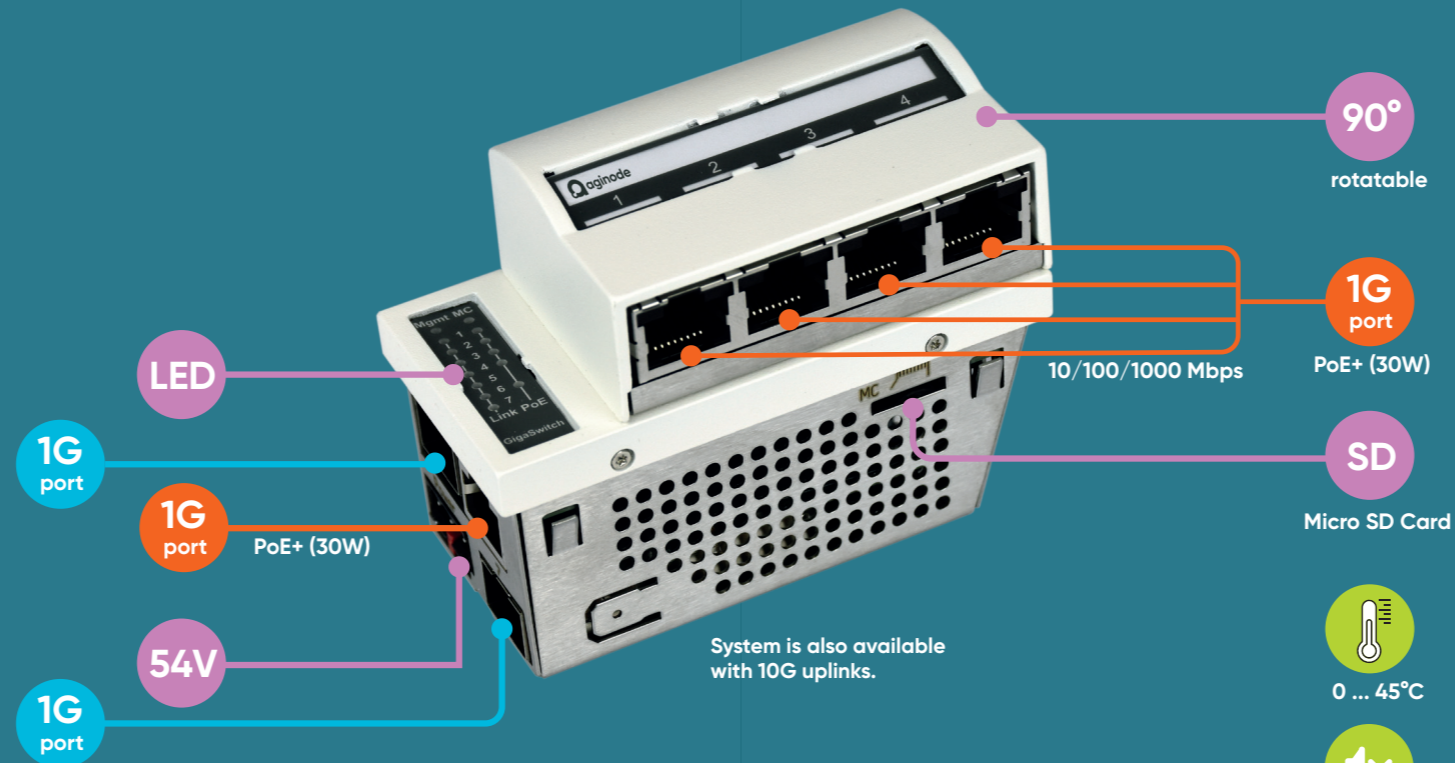
LANactive access switches are located close to the end user. These replace switches that would normally be located in a floor distribution room, which would require HVAC systems, lighting and so on. The FTTO switch itself consumes a minimum of power for data transmission. Switches also support Energy Efficient Ethernet (IEEE 802.3az), so that energy is only consumed when data is transferred. Aginode EcoMode optimises data transfer modes, based on current user needs and preferences.

Data and Power

The switch draws current from an external power supply, which can power all connected devices. As this is delivered over a relatively short distance – the last few metres of the network – there is less power loss and less energy is required.

Secure

Aginode switches provide the ideal basis for secure Local Area Networks. Intelligent Management and security features increase the security of the network and restrict unwanted data traffic in the access layer.



System is also available with 10G uplinks.



Aginode FTTO Switches are available with a rotatable head by default

Proven durability

LANactive solutions are based on selected industrial components, which are robust, durable and high-performing. Aginode carries out ongoing quality controls following the latest standards (ISO 9001). The result: an MTBF value (Mean Time Before Failure) of over 400 years.

Less space

LANactive FTTO doesn't require the bulky horizontal copper cable bundles generally used in traditional installations. This improves accessibility whilst reducing cabling volume by up to three-quarters. A considerable amount of room is saved in racks and cable pathways, adding up to considerable space savings on every floor. As fibre cabling requires no electrical grounding or shielding and is slimmer than copper conductors, it has a smaller overall cable diameter.

Longer distances

Fibre breaks through copper's 90-metre distance limit. Large distances, spanning hundreds of metres, between buildings, campuses and industrial sites can be easily bridged by fibre.

Flame retardant and fire retardant

Cabling used in an FTTO installation has outstanding flame retardant (IEC 60332-1) and fire retardant (IEC 60332-3) properties. Fibre cables comply with different fire performance classes and three additional criteria (smoke production, flaming droplets and acidity). These have been defined as part of the EU Construction Products Regulation (CPR) that now governs cable usage in buildings. In addition, the reduced cable volume and use of smaller bundles significantly reduces fire load, enhancing safety and making compliance with relevant regulations easier.

No interference

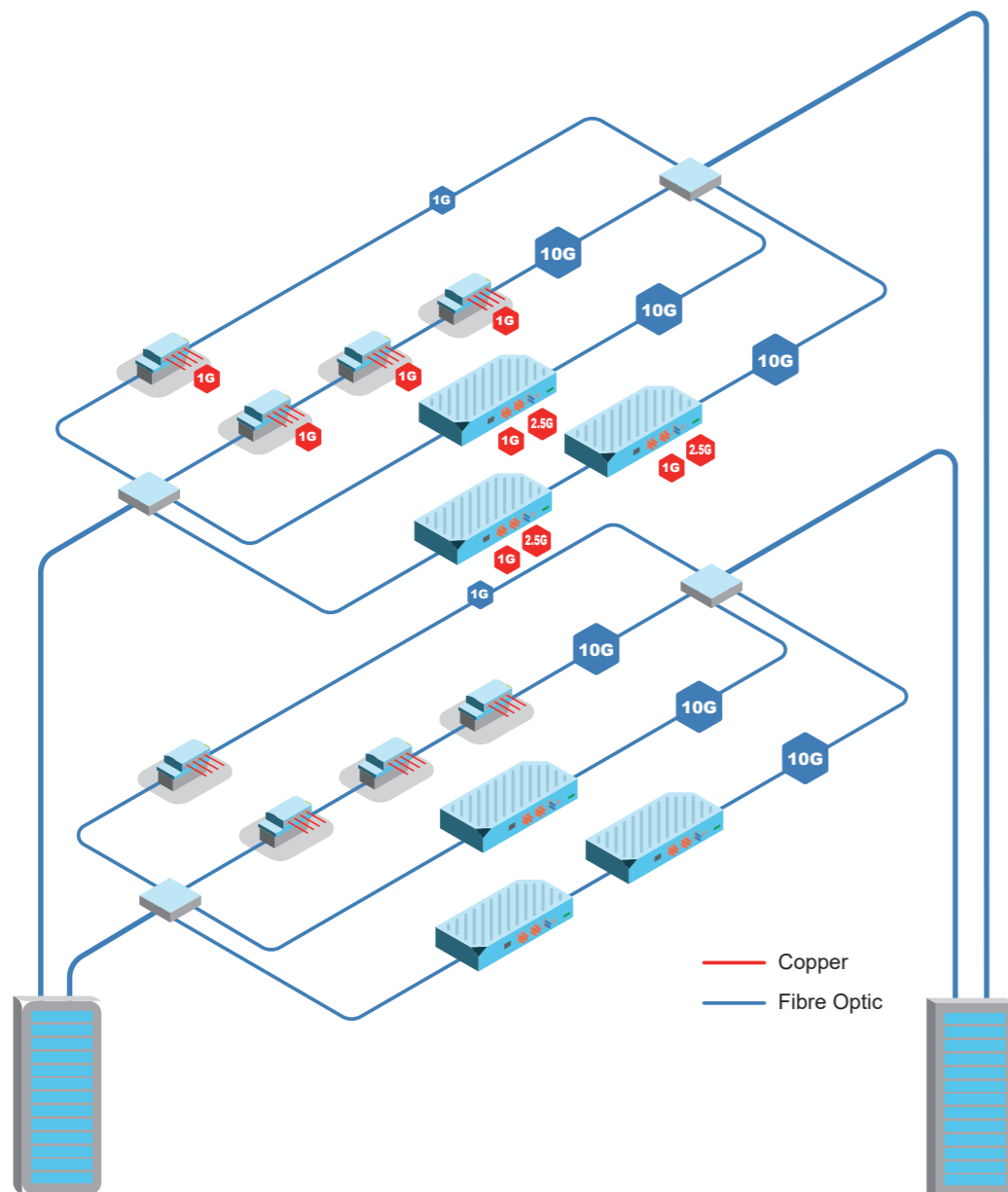
Fibre needs no grounding or earthing. Unlike copper, fibre is immune to electromagnetic interference and may run along power lines.

LANactive FTTO & DICE

WLAN is becoming increasingly important in offices, schools, universities and hospitals. New WLAN standards offer bandwidths of over 1 Gbit/s. This requires a high-performance infrastructure to provide the data. The established Gigabit Ethernet standard is reaching its limits with this application. Current WLAN access points already have a multi-gigabit interface.

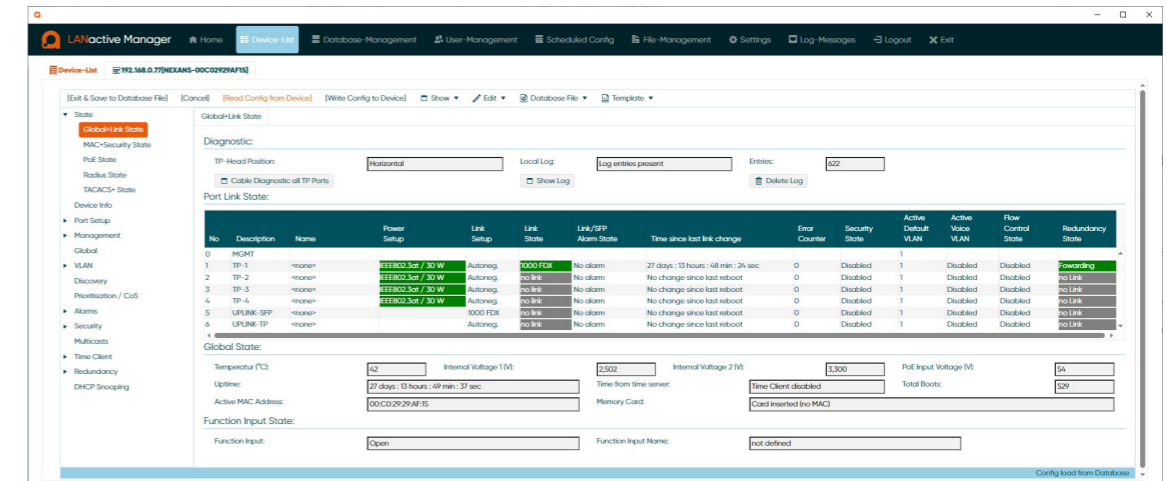
The LANactive DICE 'Digital Ceiling' concept provides the ideal basis for this. In conjunction with the established LANactive FTTO concept, maximum performance and flexibility of the IT infrastructure is guaranteed. The Aginode XGigaSwitch is equipped with two 10 Gbit/s SFP+ uplinks and four 2.5 Gbit/s for connecting wireless LAN access points. In addition, four 1 Gbit/s interfaces are available for connecting further IP devices such as surveillance cameras, intelligent lighting or building systems (smart building).

Further information can be found in our current 'LANactive DICE Digital Ceiling Solution Catalogue'



LANactive Manager

LANactive Manager provides an easy, comfortable and secure solution for configuration, management and supervision of Aginode LANactive switches.



All LANactive switches (FTTO, DICE and Industry) can be managed via LANactive Manager.

Accurate view with intelligent device lists

Categories can be defined according to a tree structure and devices can be assigned using Drag & Drop. Any number of device lists can be created, arranged in different groups, sorted by IP address, MAC address, device name and software version, or imported from environments such as XML, CSV or from a database. Counting and labelling according to category are also possible, along with various viewing options and creation of Excel or XML inventory lists. The device list is automatically updated through polling and changes are highlighted.

Software Packages

LANactive Manager is available as a standalone version and used as a desktop application for single or multiple users. This installation is perfect for on-site network engineers who are connected locally.

LANactive Manager Client-Controller

LANactive Manager Client-Controller is a client-controller software architecture that is optimised for large installations with hundreds or thousands of switches. It allows simultaneous access from different clients via client software or web interface and supports the fully automated configuration process Zero-Touch Configuration. The LANactive Manager Client-Controller is available for Windows and Linux operating systems.

Zero-Touch Configuration

Aginode LANactive Zero-Touch Configuration is a contemporary way of designing, building and operating networks with minimum effort. The use of LANactive Manager together with LANactive switches ensures networks are flexible and scalable.

Product overview

7-Port FTTO Switch with two SFP uplinks and 54V DC powered

- 3 Uplink Ports (2x SFP and 1x RJ45)
- Power over Ethernet (PoE+), up to 150W
- Efficient Energy Management
- Memory Card Slot
- Input voltage range 46 ... 57V DC



Reference	Description
88303910	GigaSwitch V5 TP(PSE+) SFP-2VI 54VDC User Ports (RJ45): 4x 1000Base-T Uplink Ports (SFP): 2x 1000Mbps Uplink Ports (RJ45): 1x 1000Base-T No of PoE User Ports: 4x PSE(PoE+) No of PoE Uplink Ports: 1x PSE(PoE+)
88303920	GigaSwitch V5 TP SFP-2VI 54VDC User Ports (RJ45): 4x 1000Base-T Uplink Ports (SFP): 2x 1000Mbps Uplink Ports (RJ45): 1x 1000Base-T No of PoE User Ports: 4x PSE(PoE+) No of PoE Uplink Ports: -

7-Port FTTO Switch with one SFP uplink and 54V DC powered

- 3 Uplink Ports (1x SFP and 2x RJ45)
- Powered Device - remote powering via Power over Ethernet
- Power over Ethernet (PoE+), up to 150Watts
- Efficient Energy Management
- Memory Card Slot
- Input Voltage Range 46 ... 57V DC



Reference	Description
88303990	GigaSwitch V5 2TP(PSE+) SFP-VI 54VDC User Ports (RJ45): 4x 1000Base-T Uplink Ports (SFP): 1x 1000Mbps Uplink Ports (RJ45): 2x 1000Base-T No of PoE User Ports: 4x PSE(PoE+) No of PoE Uplink Ports: 2x PSE(PoE+)
88303991	GigaSwitch V5 2TP(PD-F+) SFP-VI 54VDC User Ports (RJ45): 4x 1000Base-T Uplink Ports (SFP): 1x 100/1000Mbps Uplink Ports (RJ45): 2x 1000Base-T No of PoE User Ports: 4x PSE(PoE+) No of PoE Uplink Ports: 1x PD, 1x PSE (PoE+)
88303992	GigaSwitch V5 2TP SFP-VI 54VDC User Ports (RJ45): 4x 1000Base-T Uplink Ports (SFP): 1x 1000Mbps Uplink Ports (RJ45): 2x 1000Base-T No of PoE User Ports: 4x PSE(PoE+) No of PoE Uplink Ports: -

Product overview

6-Port FTTO Switch with one or two SFP uplinks and 230V AC powered

- 2 Uplink Ports (1x SFP and 1x RJ45 or 2x SFP)
- Efficient Energy Management
- Memory Card Slot
- Wide input voltage range 85 ... 240V AC



Reference	Description
88303975	GigaSwitch V5 TP SFP-VI 230VAC User Ports (RJ45): 4x 1000Base-T Uplink Ports (SFP): 1x 1000Mbps Uplink Ports (RJ45): 1x 1000Base-T No of PoE User Ports: - No of PoE Uplink Ports: -
88303971	GigaSwitch V5 SFP-2VI 230VAC User Ports (RJ45): 4x 1000Base-T Uplink Ports (SFP): 2x 1000Mbps Uplink Ports (RJ45): - No of PoE User Ports: - No of PoE Uplink Ports: -

7-Port FTTO Switch mit bis zu drei SFP Uplinks für 54V DC

- 3 Uplink ports (2x SFP+ and 1x RJ45) or
- 3 Uplink ports (3x SFP+)
- Power over Ethernet (PoE++) up to 60 Watts per port
- Energy Efficient Ethernet
- Memory Card Slot
- Wide Input Voltage Range 46 ... 57V DC (typ. 54V DC)



Reference	Description
88316722	XGigaSwitch V6 TP(PSE++) 2SFP+ 54V DC User Ports (RJ45): 4x 1000Base-T Uplink Ports (SFP): 2x 1/10Gbps Uplink Ports (RJ45): 1x 10GBase-T No of PoE User Ports: 4x PSE(PoE+) No of PoE Uplink Ports: 1x PSE(PoE++)
88316723	XGigaSwitch V6 3SFP+ 54V DC User Ports (RJ45): 4x 1000Base-T Uplink Ports (SFP): 3x 1/10 Gbit/s Uplink Ports (RJ45): - No of PoE User Ports: 4x PSE(PoE+) No of PoE Uplink Ports: -

Product overview

7-Port FTTO Switch with two SFP uplinks and 54V DC powered, **Medical series**

- 3 Uplink Ports (2x SFP and 1x RJ45)
- 4 Isolated User Ports (4kV and 2MOPP)
- Efficient Energy Management
- Memory Card Slot
- Input Voltage Range 46 ... 57V DC



Reference	Description
88303611	GigaSwitch V5 TP(PSE+) SFP-2VI 54VDC MED User Ports (RJ45): 4x 1000Base-T Uplink Ports (SFP): 2x 1000Mbps Uplink Ports (RJ45): 1x 1000Base-T No of PoE User Ports: - No of PoE Uplink Ports: 1x PSE(PoE+)
88303612	GigaSwitch V5 TP SFP-2VI 54VDC MED User Ports (RJ45): 4x 1000Base-T Uplink Ports (SFP): 2x 1000Mbps Uplink Ports (RJ45): 1x 1000Base-T No of PoE User Ports: - No of PoE Uplink Ports: -

6-Port FTTO Switch with one or two SFP uplinks and 230V AC powered, **Medical series**

- 2 Uplink Ports (2x SFP or 1x SFP and 1x RJ45)
- 4 Isolated User Ports (4kV and 2MOPP)
- Efficient Energy Management
- Memory Card Slot
- Input Voltage Range 85 ... 240V AC



Reference	Description
88303658	GigaSwitch V5 TP SFP-VI 230VAC MED User Ports (RJ45): 4x 1000Base-T Uplink Ports (SFP): 1x 1000Mbps Uplink Ports (RJ45): 1x 1000Base-T No of PoE User Ports: - No of PoE Uplink Ports: -
88303603	GigaSwitch V5 SFP-2VI 230VAC MED User Ports (RJ45): 4x 1000Base-T Uplink Ports (SFP): 2x 1000Mbps Uplink Ports (RJ45): - No of PoE User Ports: - No of PoE Uplink Ports: -

Product overview

7-Port FTTO Switch with two SFP uplinks and 54V DC powered, **Industrial series**

- 3 Uplink Ports (2x SFP and 1x RJ45)
- Robust Metal Housing and Compact Hardware Design
- Efficient Energy Management
- Memory Card Slot
- Input voltage range 46 ... 57V DC
- -25 ... +60°C



Reference	Description
88303960 88313960	GigaSwitch V5 TP(PSE+) SFP-2VI 54VDC IND User Ports (RJ45): 4x 1000Base-T Uplink Ports (SFP): 2x 1000Mbps Uplink Ports (RJ45): 1x 1000Base-T No of PoE User Ports: 4x PSE(PoE+) No of PoE Uplink Ports: 1x PSE(PoE+)
88303965 88313961	GigaSwitch V5 TP SFP-2VI 54VDC IND User Ports (RJ45): 4x 1000Base-T Uplink Ports (SFP): 2x 1000Mbps Uplink Ports (RJ45): 1x 1000Base-T No of PoE User Ports: 4x PSE(PoE+) No of PoE Uplink Ports: -

6-Port FTTO Switch with one SFP uplink and 230V AC powered, **Industrial series**

- 2 Uplink Ports (1x SFP and 1x RJ45)
- Robust Metal Housing and Compact Hardware Design
- Efficient Energy Management
- Memory Card Slot
- Wide input voltage range 85 ... 240V AC
- -25 ... +60°C



Reference	Description
88303963	GigaSwitch V5 TP SFP-VI 230VAC IND User Ports (RJ45): 4x 1000Base-T Uplink Ports (SFP): 1x 100/1000Mbps Uplink Ports (RJ45): 1x 1000Base-T No of PoE User Ports: - No of PoE Uplink Ports: -

Product overview

LANactive PoE++ Head

- PoE++ upgrade for current Aginode LANactive FTTO series
- 4x 1000Base-T ports with PoE++ acc. to IEEE802.3bt
- 4x PoE++ with up to 60W output power (Type 3)
- Total power budget max. 120W



Reference	Description
88303649	LANactive PoE++ Head GigaSwitch Kit Single head module for upgrades
88303648	LANactive PoE++ Head, pre-installed An option for new switches to be delivered directly with a PoE++ head

Click-In Power Supply 54VDC/70W

- Easy and toolless installation
- Support of 45mm installation format
- Fanless System with aluminium faceplate for best thermal performance
- Output Power: 70 Watts
- Redundant connection without external diodes possible



Reference	Description
88646210	Click-In Power Supply 54VDC/70W 90x45 Input range: 90-265V AC Rated output range: 54V DC Max. output power: 70W Dimensions: 90 x 45 x 46mm Operating temp. range: 0 ... 45°C

Product overview

Click-In Power Supply 54VDC/130W

- Easy and toolless installation
- Support of 45mm installation format
- Fanless System with aluminium faceplate for best thermal performance
- Output Power: 130 Watts
- Redundant connection without external diodes possible



Reference	Description
88646241	Click-In Power Supply 54VDC/130W 135x45 Input range: 90-265V AC Rated output range: 54V DC Max. output power: 130W Dimensions: 135 x 45 x 52mm Operating temp. range: 0 ... 45°C

Installation Power Supplies 54VDC/65W

- with pre assembled 3-pin connector or moulded 3-pin connector
- Fanless design
- Control-LED
- Output Power: 65 Watts

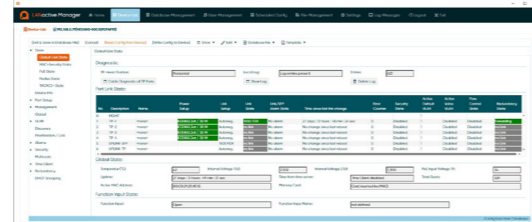


Reference	Description
88646066	Installation Power Supply 54VDC/65W Input range: 100-240V AC Rated output range: 54V DC Max. output power: 64,8W Dimensions: 120 x 54 x 32mm Operating temp. range: 0 ... 40°C
88646077	Power Supply with Schuko 54VDC/65W Input range: 100-240V AC Rated output range: 54V DC Max. output power: 64,8W Dimensions: 120 x 54 x 32mm Operating temp. range: 0 ... 40°C

Product overview

LANactive Manager

- Stand-Alone version and Client-Controller version
- Zero-Touch Configuration
- Extended management for firmware and configuration changes
- Different access levels, roles and user specified device lists
- Logging and alarming functionality
- Free of charge evaluation version



Reference	Description
88301908	LANactive Manager Single User Licence
88301909	LANactive Manager Company Licence
88301920	LANactive Manager Controller Licence

Memory Cards

- Own MAC Address
- Backup of latest firmware and configuration
- Easy exchange of a failed switch
- Extended temperature range: -40...85°C



Reference	Description
88300691	microSD Card with MAC Delivery: Separately in plastic case
88300693	microSD Card with MAC, integrated Delivery: Pre-installed in the switch

USB Console Cable GigaSwitch Series

- USB to 10-Pin mini-socket console cable
- On-site configuration of Aginode GigaSwitch Series
- Same functionality as configuration via Telnet or SSH
- Easy connection via USB



Reference	Description
88300715	USB Console Cable GigaSwitch Series Connector A: 10-pin mini-socket Connector B: USB

Product overview

Aginode SFP 1000 Transceiver GI(LC)

- Gigabit Ethernet
- Digital Diagnostic Monitoring
- Wide Temperature Range (-40°C up to +85°C)
- LC connector



Reference	Description
88646015	Aginode SFP 1000 Transceiver GI(LC)E Data rate: Gigabit Eth. Fiber Type: multi mode Link Type: dual fiber TX Wavelength: 850nm RX Wavelength: 850nm Link Length: 550m
88646016	Aginode SFP 1000 Transceiver SM(LC)E L10 Data rate: Gigabit Eth. Fiber Type: single mode Link Type: dual fiber TX Wavelength: 1.310nm RX Wavelength: 1.310nm Link Length: 10km

Aginode SFP 1000 Transceiver SM(LC) BIDI

- Gigabit Ethernet
- Digital Diagnostic Monitoring
- Wide Temperature Range (-40°C up to +85°C)
- LC connector

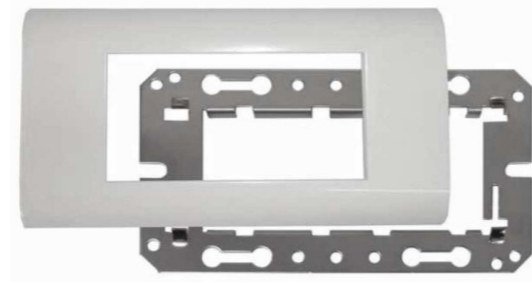


Reference	Description
88646073	Aginode SFP 1000 Transceiver SF3(LC)E L10 Data rate: Gigabit Eth. Fiber Type: single mode Link Type: single fiber TX Wavelength: 1.310nm RX Wavelength: 1.550nm Link Length: 10km
88646075	Aginode SFP 1000 Transceiver SF5(LC)E L10 Data rate: Gigabit Eth. Fiber Type: single mode Link Type: single fibre TX Wavelength: 1.550nm RX Wavelength: 1.310nm Link Length: 10km

Product overview

Cover set 45x90

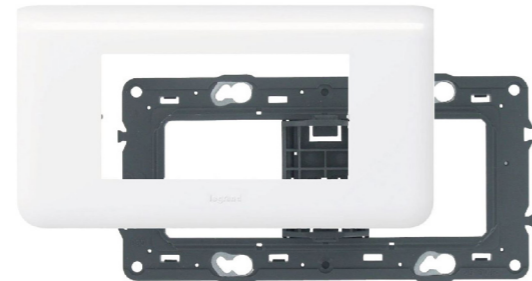
- Universal mounting frame
- Wide range of compatibility
- Pure white, like RAL 9010
- Integrated locking mechanism



Reference	Description
88646030	Cover set 45x90 incl. MF, PW/9010 80x150

Legrand Cover Set 45x90

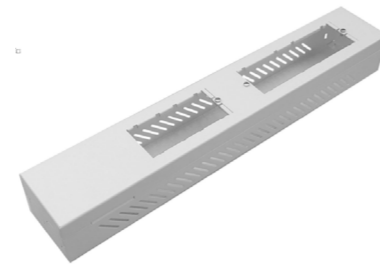
- 45x90mm or 45x135mm
- 45mm Snap-In mechanism
- Signal white, like RAL 9003



Reference	Description
88646031	Cover 82x153/45x90 LGD, SWS, hor
88646032	Universal mounting frame for LGD 82x153
88646266	Cover 82x224/45x135 Legrand, white, hor.
88646267	Universal support for Legrand cover 82x224

Installation profile 4x6 Click-In

- Suitable for GigaSwitch and Click-In 70W or 130W power supplies
- Incl. wall mounting kit
- 4x M25 holes for cable glands
- Hole for Kensington lock
- Compact design

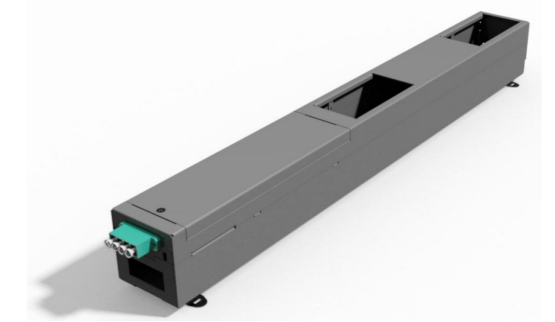


Reference	Description
88646310	Installation profile 4x6 Click-In RAL 9010, 4xPG Dimensions (WxHxD): 70 x 52 x 400 mm Material: Painted sheet steel Colour: pure white, like RAL 9010
88646037	Blind cover 45x45, RAL 9010 Dimensions (WxHxD): 45 x 45 mm Material: Plastic Colour: pure white, like RAL 9010

Product overview

Installation profile 4x6 Click-In

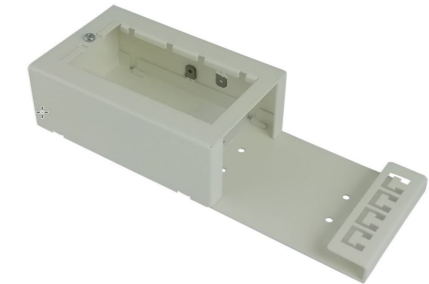
- Integration of 2 Switches
- 230VAC supply via power connector
- 65W 54VDC power supply
- 1x opening for Twisted Pair patch cord
- Dimensions (BxHxT): 56x56x500 mm



Reference	Description
88646189	Dual Version Profile 56x56x500 RAL9010, incl. PSU Wago
88646191	Mounting kit for cable tray systems
88646192	Mounting kit for wall mounting
88646196	DIN rail mounting kit

Mounting Kit GSw 190x40x70mm

- Housing for mounting a LANactive FTTO switch
- Optimized for wall or desktop mounting
- Strain relief on the side
- 45x90mm slot for the FTTO switch

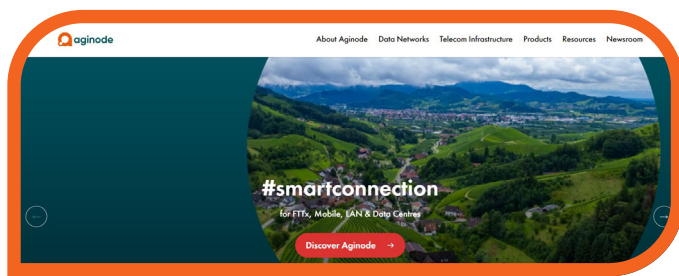


Reference	Description
88646299	Mounting Kit GSw 190x40x70mm

#smartconnection



Connect via **LinkedIn**



Learn more on **YouTube**



Visit **www.aginode.net**

Contact us via
info@aginode.net

www.aginode.net

