

#smartconnection



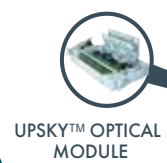
Radio access network solutions

www.aginode.net



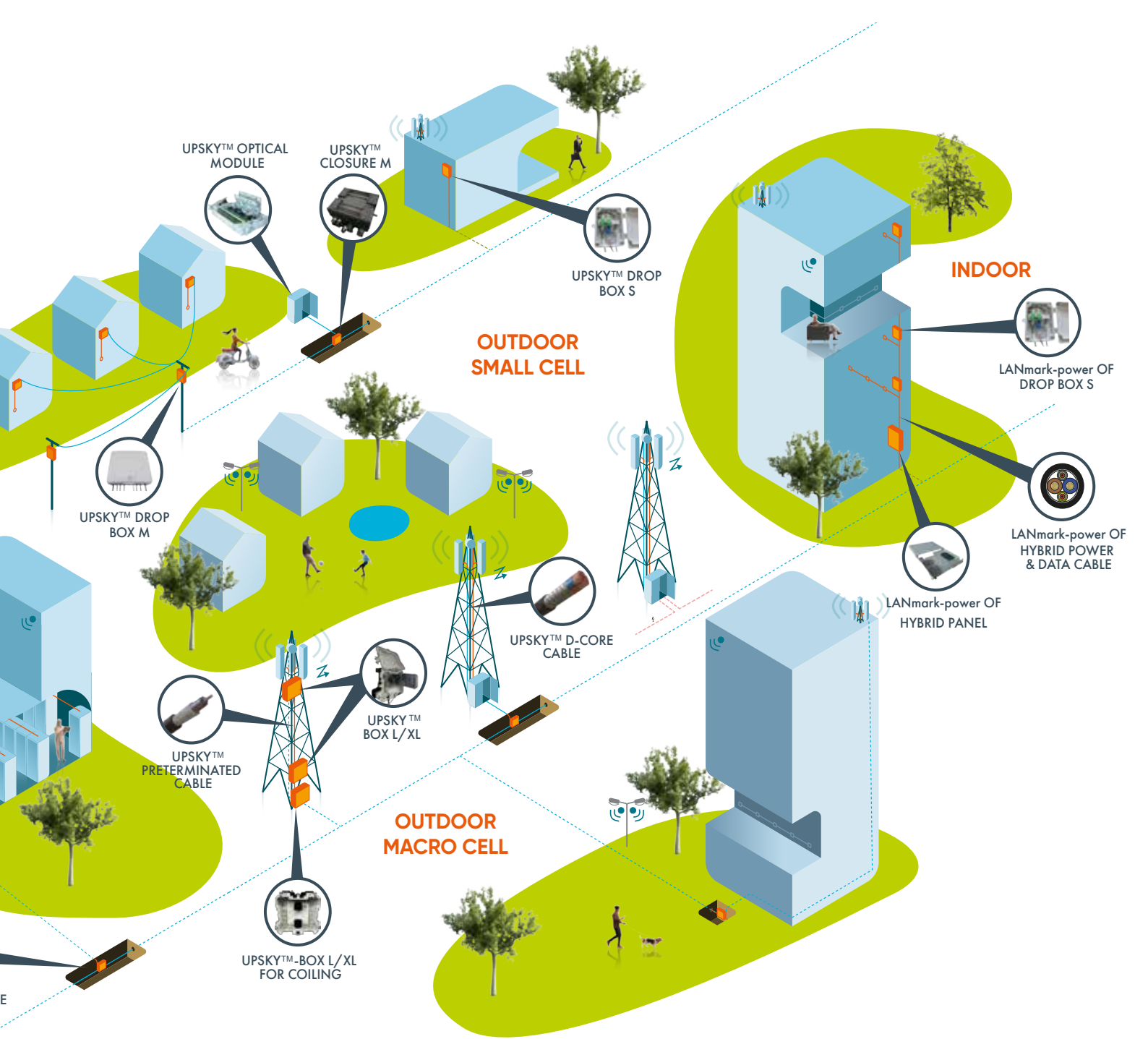
PTTA & FTTH infrastructure solution

- Global radio access network offer adapted to regulations and usages addressing fronthaul and backhaul,
- Solutions designed for macro and small cells application, for outdoor and indoor coverage,
- Reduced cost of ownerships and enhanced reliability of the infrastructure.



UPSKY™

Qaginode



OUTDOOR OFFER MACRO CELL

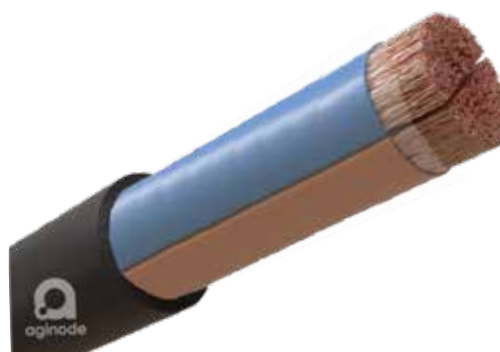
UPSKY™ D-CORE shielded dual copper conductor cable

- Dual conductor cable for the DC electric interconnection between the Base Unit and the Radio Units 4G/5G
- Specific D-CORE conductors from 2x4mm² to 2x35mm²
- Electromagnetic shielding EMC protection
- Compatible with connectors used by major operators and OEMs
- Halogen-free outer sheath, flame retardant, EuroClass CPR certified available in 2 versions Eca or Dca
- Awesome flexibility



UPSKY™ D-CORE unshielded dual copper conductor cable

- Dual conductor cable for the DC electric interconnection between the Base Unit and the Radio Units 4G/5G
- Specific D-CORE conductors from 2x4mm² to 2x35mm²
- Compatible with connectors used by major operators and OEMs
- Exclusive Auto-Connect earthing system
- Halogen-free outer sheath, flame retardant, CPR EuroClass certified, available in Eca version
- Awesome flexibility



UPSKY™ preterminated cable single & multimode

- Supplied with UPSKY™ BOX L / XL connector block
- High mechanical resistance
- Multimode and single-mode fibres in the same cable
- 24/48/72 fibres



OUTDOOR OFFER MACRO CELL



UPSKY™ box L/XL

- Mobile Antenna Connection box 3x24 or 72 OF
- A Plug-and-Play Module
- Compatible with numerous optical cable references
- Antenna links connected on the front panel
- Fully secured fan-outs
- QR code and NFC tracking INFRABIRD™ ready
- Available with PTTA management functions



UPSKY™ box L/XL for coiling

- Complete cable protection in the box
- Specific upper and lower antenna support
- Cable storage
- Easy coiling



UPSKY™ closure L/XL

- Box for aerial use (wall or pole mounting)
- IP68 and IK09 protection
- Size H300/400xW350xD230mm
- Patching for up to 32 SC adaptors
- Splicing for up to 144 splices with G652D or G657A fibres
- Midspan oval entry with fixing at main FO cable Ø6 to 20mm
- 8-port outputs with fixing for up to 8x4 cables Ømax 6mm
- Side clip closing
- Hybrid configuration on demand
- QR code and NFC tracking INFRABIRD™ ready



UPSKY™ optical module

- Width 19"/ETSI standard, depth 185mm
- Swiveling modules made in polycarbonate
- Different types with combined functions: patching, splicing and patching, splitting splicing and patching (SC, LC,...)
- Premium connectivity for single or multimode fibre

OUTDOOR OFFER SMALL CELL

UPSKY™ closure M

- Splicing closure - underground & outdoor
- Innovative concept with 3 sealings
- Bringing a novel implementation
- Patented
- Ultra compact and designed for multiple openings



UPSKY™ optical module

- Width 19"/ETSI standard, depth 185mm
- Swiveling modules made in polycarbonate
- Different types with combined functions: patching, splicing and patching, splitting splicing and patching (SC, LC,...)
- Premium connectivity for single or multimode fibre



UPSKY™ drop box M

- Indoor or outdoor aerial use, wall or pole mounting (complementary accessory)
- IP55, IK07, plastic UL94 V2 protection
- Size H175xW145xD45mm
- Patching for up to 4 SC cavity connectors
- Splicing for up to 8 splices for G652D or G657A fibres
- Bottom entry with cable stowage Ømax12mm
- Bottom outputs with fixing up to 4 cables (drop) Ømax 4.5mm
- Torx T30 screw lock (key supplied)



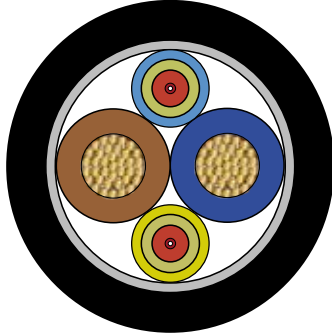
UPSKY™ drop box S

- The hybrid box's smart design separates the copper wires and fibres for efficient cable management
- The copper wires are directed through a tube, leading directly to the active device while the fibres are expertly terminated inside the box and connected to adaptors
- This configuration allows for easy patching of an upgraded active device without the need for re-terminating cables



LANmark-power OF

INDOOR OFFER



LANmark-power OF hybrid power & data cable

- 2 Single-mode G657.A2 optical fibres
- 2 x 1,5mm² isolated copper conductors in a single cable
- Available in fire protection performance CPR B2ca
- Compatible with connectors used by major operators and OEMs
- UV-resistant outer sheath and water blocking tape
- Reduced diameter 8,4mm
- Easy to strip



LANmark-power OF hybrid termination box

- The hybrid box's smart design separates the copper wires and fibres for efficient cable management
- The copper wires are directed through a tube, leading directly to the active device, while the fibres are expertly terminated inside the box and connected to adaptors
- This configuration allows for easy patching of an upgraded active device without the need for re-terminating cables



LANmark-power OF hybrid panel

- The hybrid solution is completed with a panel developed to receive and connect hybrid cables consisting of fibre optic and power cables
- This 1U panel features a sliding tray for convenient and secure access to the cable termination points. The quick-connect design simplifies and speeds up hybrid cable connection
- Fibre splice cassettes improve the organization and protection of the fibre cores during splicing. This improves the reliability of data transmission within a building or even outdoors

STREET CABINET OPEN FRAME

OPTEASTAR 2+

- Modular cabinet: 19" or ETSI compatible
- Standard width: 600mm or 900mm
- Height: 32U, 42U or 45U
- Patch cord management next to patch panels for the 900m width panel
- Full metal or transparent door
- Different locking options
- Suitable for row configurations and back-to-back installations
- Cabinet can be fixed to the wall, floor back-to-back or side-by-side
- Fibre cable entry from top or bottom of cabinet



Street cabinet

- Metal street cabinets for FTTH networks
- Available in steel or aluminium. Aluminium cabinets are lighter and offer better protection against corrosion
- Double door cabinet
- 2 racks in 19", 2x 28U, left and right
- Width : 1500mm
- Height : 1600mm with 200mm skirting included
- Coiling area in the middle for management of patch cords overlengths
- IP55/IK10 protection
- Operating temperature from -40 to +65°C
- 2 different lock systems (triangular lock and INFRABIRD™)



FOCUS ON...



Focus on... UPSKY™ D-CORE cable

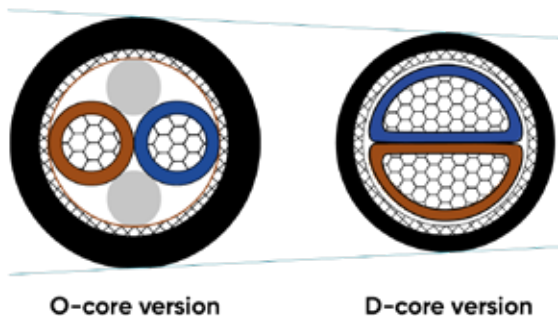


ONE OF THE SMALLEST AND LIGHTEST CABLES OF THE MARKET

A CPR rated extensive range for outdoor and indoor 4G/5G applications

Power To The Antenna D-CORE is a dual conductor power cable. It can be used as a DC power cable for the interconnection between Base Unit and Radio Units on mobile towers or rooftops. The D-shape of the isolated conductors reduces the diameter of these cables with no negative impact on the properties. In addition, these cables have also have best-in-class flexibility. The Dca fire Euroclass allows indoor usage when needed.

Deployed on more than 20 000 5G base stations in Europe.



Optimised footprint

- Reduced cable diameter (-19%)
- Reduced weight (at least -12%)
- Up to 40% space savings in standard cablaways
- Reduced and optimised environmental impact

Benefits of the cable

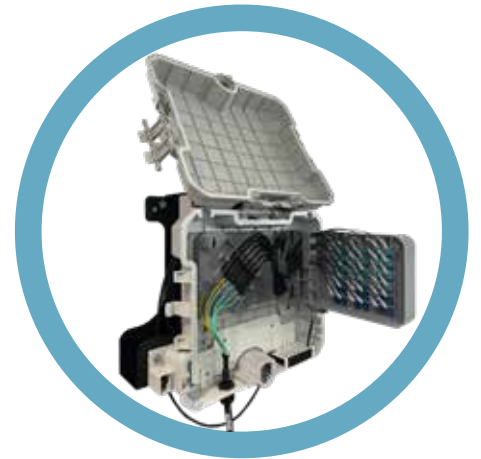
- Reduced diameter
- Reduced weight
- Easy to strip
- From 2x4mm² to 2x35mm²
- Compatible with market connectors
- CPR Eca and Dca compliant
- Reinforced EMC protection (optional)
- High tensile strength
- Ultra flexible (Class 5) with reduced bending radius
- Outdoor/Indoor applications
- Aginode quality
- Manufactured in France



Specification	PTTA D-CORE shielded	PTTA D-CORE unshielded
Euroclass CPR	Eca & Dca	Eca
Diameter (mm)	11.0 to 17.0	11.0 to 17.0
Weight (Kg/km)	177 to 676	160 to 650
Copper conductors range	2 x 4mm ² - 2 x 6mm ² 2 x 10mm ² - 2 x 16mm ² 2 x 25mm ² - 2 x 35mm ²	2 x 4mm ² - 2 x 6mm ² 2 x 10mm ² - 2 x 16mm ² 2 x 25mm ² - 2 x 35mm ²

Focus on... UPSKY™ BOX L/XL

ANTENNAS HUB WITH MORE THAN 100 AVAILABLE CONFIGURATIONS TO BETTER MEET CUSTOMER NEEDS



Connection box for antennas (24/72 FO)

Front panel connectorised antenna links, one-handed connection to avoid handling breakage

- Antenna cables are connected without opening modules
- Connectors are permanently accessible from their position on the front panel
- Technician can work quickly and safely with just one hand

Fully secure fan-out to avoid fibre breakage

- Primary fan-out fixed at the box entry
- Secondary fan-out fixed and locked in the connection modules

Customised cable input et output to meet every cable specifications

- Guaranteed IP55 protection
- Compatible with a wide range of optical and hybrid cable references

Plug & Play 24/72 FO modules to save up to 70% of installation time

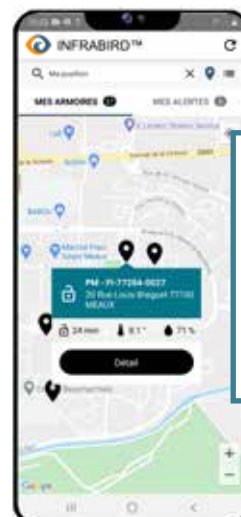
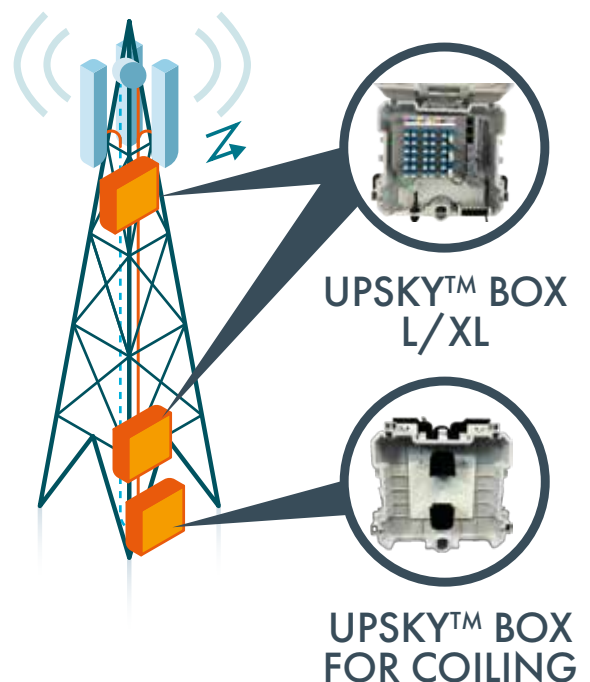
- Installed in less than 1 minute, including connection
- Equipped upon delivery or to be added during the installation of new antennas

Adaptable opening direction make it easier for the technician to install the product in its environment

- While installing the box, you can choose the most convenient way to open it: from the right, left, or top
- Several locking systems (keys) are available

Link to NFC identification software, RFID delivery control, and ready for INFRABIRD™ access control

- Digital installation assistance
- Cable identification
- Secured supply chain
- Opening detection.



#smartconnection

Connect via **LinkedIn**



Learn more on **YouTube**

Visit **www.aginode.net**

Contact us via
info@aginode.net

October 2024. Aginode. All rights reserved. All details are indicative only and subject to change. All trademarks registered by Aginode.

www.aginode.net

