

LANactive Management Software

- Management Software for the current LANactive switches
- Zero-Touch Configuration
- Web interface
- Extensive diagnostic functionality
- Positioning on a world map or custom building layouts
- Secure communication between software, switches and clients

Application

Aginode LANactive Manager is a centralized software solution to configure, manage and supervise the current hardware series of Aginode LANactive switches. The software provides an easy and comfortable way for the operation of all LANactive FTTO and LANactive Industry switches. In case of troubleshooting LANactive Manager provides an extensive setup of information and tools to decrease the debugging time.

Stand-Alone and Controller Version

Aginode LANactive Manager is available in two software packages: as local desktop installation for single user or as central server application with a web based frontend and multiple and simultaneous user access.

Zero-Touch Configuration

Aginode LANactive Zero-Touch Configuration is part of the LANactive Manager in combination with the controller license and is a contemporary way of designing, building and operating networks with minimum effort. The use of LANactive switches in combination with the LANactive Manager ensures networks are fully automated, flexible and scalable.

After connecting a Aginode LANactive switch to a network segment, the switch will automatically link to its controller to receive provisioned firmware and configuration.

Fully Automated Operation

Next to the Zero-Touch Configuration feature, LANactive Manager provides several fully automated tasks e.g. a scheduled configuration or firmware update for all or dedicated devices, a Master-Configuration option or Autodiscovery functionality.

Increased Security

LANactive Manager uses only encrypted and secured communication with the connected LANactive switches to increase the security level and avoid unwanted access to data.

Test and Evaluation Version

LANactive Manager can be downloaded free of charge for evaluation purposes. Compared to the licensed version, the following restrictions apply:

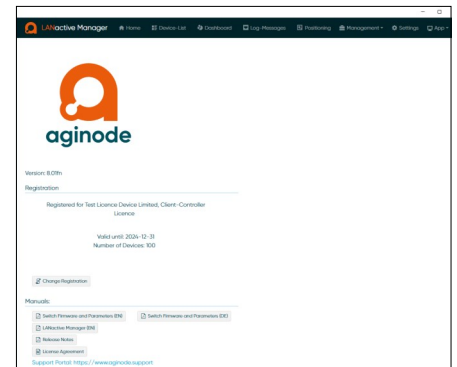
- Delayed starting screen for registration key request
- Maximum five switches can be saved in a database

Besides the evaluation version there is the possibility to get a time limited test key.

Support Portal

The LANactive Manager documentation can be loaded via help menu as a PDF file or at the Aginode Support Portal.

Please visit Aginode Support Portal at:
<https://www.aginode.support/>



LANactive

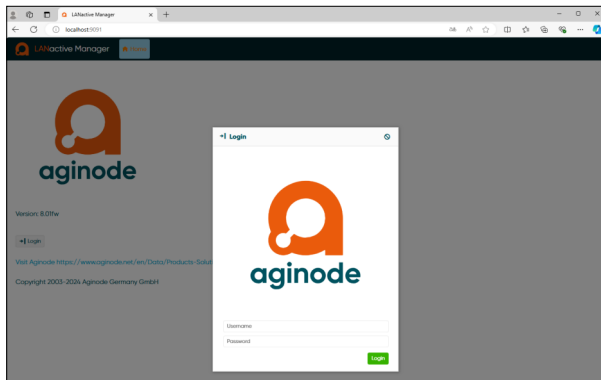
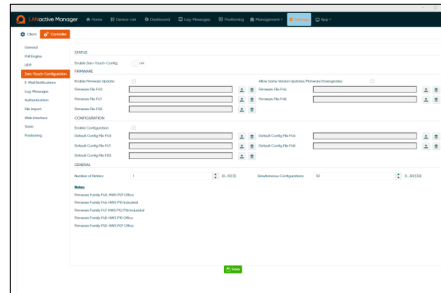
Controller Features

Zero-Touch Configuration

Zero-Touch Configuration is a process to automate the remote configuration of LANactive switches. Time-consuming pre-configuration of switches is obsolete.

After installation and powering on a LANactive switch the switch contacts automatically the LANactive Manager to receive a firmware update if necessary and a default or pre-defined switch configuration.

Zero-Touch Configuration is part of the LANactive Manager in combination with the controller license.



Web based user interface

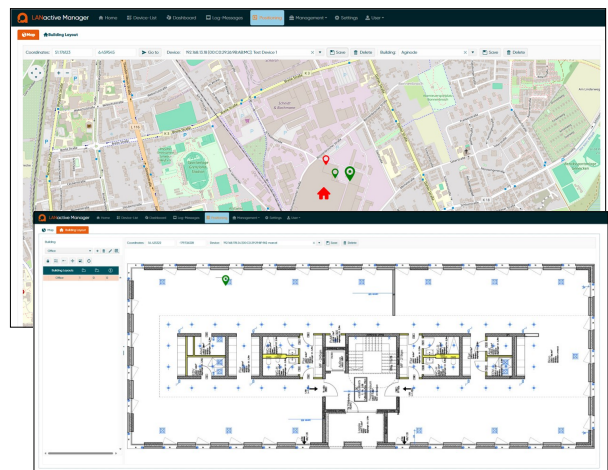
The web based user access allows technicians and administrators to connect from each end device to the LANactive Manager interface using a standard browser. Therefore, the LANactive Manager must be installed as the controller instance including a controller license.

HTTPS can be used to access LANactive Manager. Either the default certificate or your own certificate can be used.

Positioning

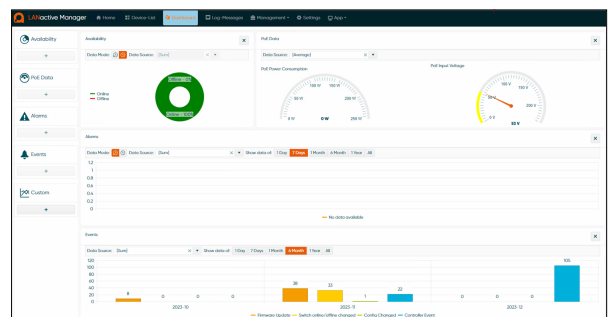
Positioning allows the user to place devices on a world map or custom building layouts. On the map users can add devices, or even locations with a simple mouse click. Longitude and latitude will automatically be set.

The Building layouts allows floor plan to be uploaded and devices can be positioned in locations where they are installed



Dashboard

The dashboard provides a comprehensive overview of critical network parameters, including Power over Ethernet (PoE) consumption values, temperature behavior and switch availability.



Feature Availability

| Feature | Stand-Alone | Controller |
|---|--------------|-------------------|
| Remote configuration of all Aginode LANactive switches | Yes | Yes |
| Web interface (http and https) | No | Yes |
| Zero-Touch Configuration support | No | Yes |
| Extended device list with individual sorting parameters | Yes | Yes |
| Extensive remote diagnostic and monitoring | Yes | Yes |
| Time scheduled configuration and firmware update | No | Yes |
| Layer-2 and Layer-3 Autodiscovery feature | Yes | Yes |
| Master configuration templates | Yes | Yes |
| History function for old device configuration | Yes | Yes |
| Comprehensive system logging | Yes | Yes |
| Dashboard with Network Information | No | Yes |
| Syslog and SNMP Server | No | Yes |
| Sophisticated user management with different access levels, roles and user specified device lists | No | Yes |
| Detailed assignment of user rights up to the port level | No | Yes |
| Device lists with multiple user access | No | Yes |
| SQL Database containing all information | No | Yes |
| Extended import and export function (XML, CSV or Excel format) | Yes | Yes |
| Client authentication via RADIUS and Active Directory (LDAP) | No | Yes |
| Positioning in Map and Building | No | Yes |
| Operating system | Windows only | Windows and Linux |

Ordering Information

| Article Number | Description |
|----------------|--|
| 88643008 | LANactive Manager Controller Licence including the right to use 500 nodes including one year licence fee |
| 88643009 | LANactive Manager Controller extension packet. Increases the number of manageable nodes by 500 |
| 88643010 | LANactive Manager Controller extension packet. Increases the number of manageable nodes by 1000 |
| 88643011 | LANactive Manager Controller extension packet. Increases the number of manageable nodes by 2000 |
| 88643012 | LANactive Manager Controller licence fee 500 nodes for one year |
| 88643013 | LANactive Manager Controller licence fee 1000 nodes for one year |
| 88643014 | LANactive Manager Controller licence fee 2000 nodes for one year |

| Article Number | Description |
|----------------|---|
| 88643015 | LANactive Manager Stand Alone Licence including the right to use 100 nodes including one year licence fee |
| 88643016 | LANactive Manager Stand Alone extension packet. Increases the number of manageable nodes by 100 |
| 88643017 | LANactive Manager Stand Alone extension packet. Increases the number of manageable nodes by 200 |
| 88643018 | LANactive Manager Stand Alone licence fee 100 nodes for one year |
| 88643019 | LANactive Manager Stand Alone licence fee 200 nodes for one year |

Screenshots

