

LANActive Management Software

LANACTIVE MANAGER CONTROLLER LICENCE

Aginode Ref: 88301920

The LANActive Manager Controller Licence allows the usage of LANActive Manager as a controller instance on a separate hardware. It allows multiple user access from different PCs.

LANActive Management Software

Management Software for all LANActive switches

- Zero-Touch Configuration
- Web interface
- Extensive diagnostic functionality
- Secure communication between software, switches and clients

Controller Version

Aginode LANActive Manager with Controller License is based on the controller installation package.

Zero-Touch Configuration

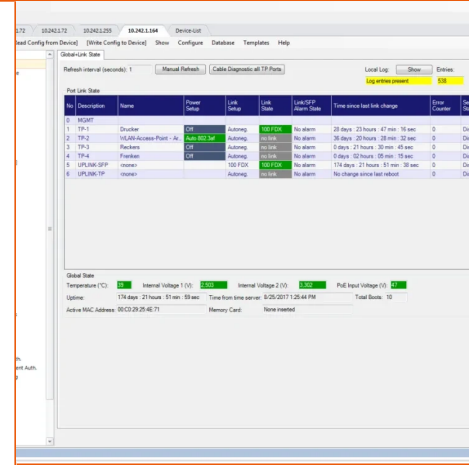
Aginode LANActive Zero-Touch Configuration is part of the LANActive Manager in combination with the controller license and is a contemporary way of designing, build-ing and operating networks with minimum effort. The use of LANActive switches in combination with the LANActive Manager ensures networks are fully automated, flexi-ble and scalable. After connecting a Aginode LANActive switch to a network segment, the switch will automatically link to its controller to receive provisioned firmware and configuration.

Fully Automated Operation

Next to the Zero-Touch Configuration feature, LANActive Manager provides several fully automated tasks e.g. a scheduled configuration or firmware update for all or dedicated devices, a Master-Configuration option or Autodiscovery functionality.

Increased Security

All drawings, designs, specifications, plans and particulars of weights, size and dimensions contained in the technical or commercial documentation of Aginode is indicative only and shall not be binding on Aginode or be treated as constituting a representation on the part of Aginode.



LANactive Manager uses only encrypted and secured communication with the connected LANactive switches to increase the security level and avoid unwanted access to data.

Test Version for Evaluation

LANactive Manager can be downloaded free of charge for evaluation purposes. Compared to the licensed version, the following restrictions apply:

- Delayed starting screen for registration key request
- Maximum five switches can be saved in a database

Support Portal

The LANactive Manager documentation can be loaded via help menu as a PDF file or at the Aginode ANS Support Portal.

Please visit Aginode ANS Support Portal at:

<https://www.nexans-ans.de/support/>

LANactive Manager Controller Licence

Characteristics

Documentation

Detailed Datasheet pdf — 808.8 KB [Download](#) ↓

All drawings, designs, specifications, plans and particulars of weights, size and dimensions contained in the technical or commercial documentation of Aginode is indicative only and shall not be binding on Aginode or be treated as constituting a representation on the part of Aginode.