

# LANsense Fibre Panels

## LANSENSE-OF 96MTP/LC STRAIGHT MULTIMODE BEIGE PATCH PANEL BLACK

**Aginode Ref:** N883.MSLC96W

- Preloaded patch panel with adaptors for fast installation in data centres
- High density connectivity - MTP/LC 96 fibres MM presentation
- Sliding and tilting patch panel for ease of installation, upgrade and maintenance
- Optimised for installation of Pre-Term fibre and with enhanced fibre management features
- Improved splice cassettes with hinged trays for ease of installation and inspection
- Labelling facility for port identification and patch cord management within 1U

The new pre-loaded patch panel is specifically designed for installation in data centres where the high density, integrated patch cord guide and enhanced installation benefits of the patch panel meet the key requirements for implementation.

The patch panels are pre-loaded with LC adaptors and are available in high-density version. The high-density version has 96 MTP-F/ LC connections. Singlemode and multimode versions are available.

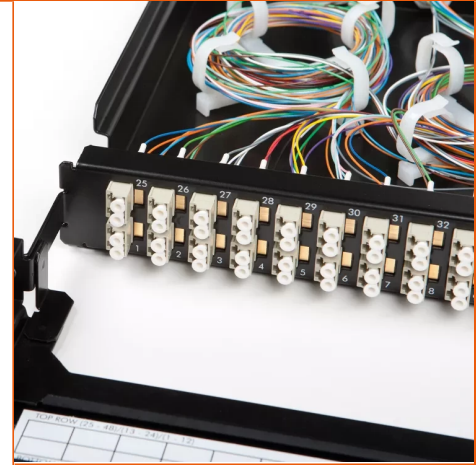
The new patch cord guide sits in front of the adaptors and allows the patch cords to be managed within the same 1 U saving expensive rack space.

The patch cord guide also provides a labelling facility to identify connections. Additional labelling is provided by printed port numbers on the adaptor plate.

The newly developed chassis of the patch panel can be removed from the rack completely to ease the installation of direct terminated or spliced fibre and faster installation of pre-terminated cables. The tray tilts and slides for improved access to the installed fibres for inspection.

The pre-loaded patch panel has extended cable management with multiple entries to provide maximum flexibility. It accommodates both cable glands and ties wrap for strain relief of the cables. The cable gland sizes are 20 mm (8x) and 25 mm (2x).

For improved fibre management the fibres can be arranged in 4 separate loops for added flexibility and organisation. The support bases and the rings for these 4 loops are included.



### STANDARDS

ISO/IEC 11801

All drawings, designs, specifications, plans and particulars of weights, size and dimensions contained in the technical or commercial documentation of Aginode is indicative only and shall not be binding on Aginode or be treated as constituting a representation on the part of Aginode.

The patch panel chassis has multiple, specially designed, slots at the rear to fix the cable glands of Aginode' pre-terminated cables. There is ample space inside the patch panel to organise the flexible fan-out of the pre-terminated cables.

Panels are fully painted in black for a professional look and feel

# LANsense-OF 96MTP/LC Straight Multimode Beige Patch Panel Black

---

## Characteristics

*All drawings, designs, specifications, plans and particulars of weights, size and dimensions contained in the technical or commercial documentation of Aginode is indicative only and shall not be binding on Aginode or be treated as constituting a representation on the part of Aginode.*