

LANsense Next Generation Analyser

LANSENSE NGA SYSTEM MASTER CARD

Aginode Ref: N870.SMC

The Next Generation Analyser is an exciting new development which opens up many possibilities for efficient analyser network design and advanced functionality to support the LANsense platform.

The System Master Card handles communication between the analyser network and the LANsense software/database. Each card is supplied with 2 10/100 Ethernet ports and an SPP stub connection used for the attachment of a USB Interface Adaptor or other device.

A minimum of 1 SMC is needed per installation - the maximum number being determined by the way in which the total install is sub-divided into patch zones - in this case one SMC is required per patch zone.

The SMC is housed in the right hand slot of a 3U Card Cage

The SMC is the central control unit which handles communication between attached devices such as the Analyzer Cards and HMI Panels.

Communication between devices are relayed via the RS485 bus (backplane) which contains the Analyzer Bus and the SPP Bus.

Within an SMC, there are two 10/100BaseT LAN ports. Either can be connected to the analyser agent and the other can be used as automatic changeover in case of LAN failure or a predetermined time of inactive LAN connectivity with the SMC.

Only one SMC is required per patch zone.

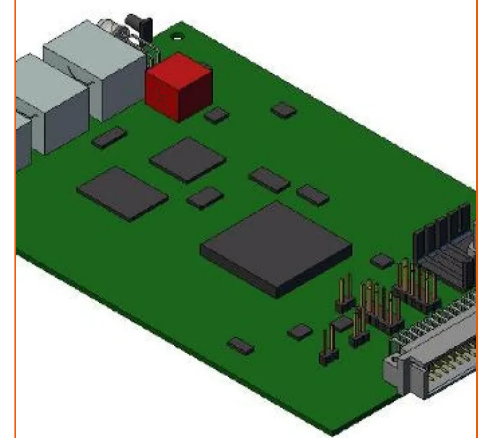
Connectors

Half Euro Connector (CN3): SMC interface.

RJ45 shielded connector (CN4): LAN 1

RJ45 shielded connector (CN5): LAN 2

RJ45 shielded connector (CN6): SPP Stub



STANDARDS

ISO/IEC 11801

All drawings, designs, specifications, plans and particulars of weights, size and dimensions contained in the technical or commercial documentation of Aginode is indicative only and shall not be binding on Aginode or be treated as constituting a representation on the part of Aginode.

Indicators

LED 1 – Bi-Color

LED 2 – Bi-Color

Switches

Push Button: SMC ID Programming

Power Requirements and Rating

Power Consumption: 230mA @ 12V DC

Operating Temperature

0 - 52 deg C with operating humidity of 85% (non condensing)

Weight

0.12Kg

LANsense NGA System Master Card

Characteristics

All drawings, designs, specifications, plans and particulars of weights, size and dimensions contained in the technical or commercial documentation of Aginode is indicative only and shall not be binding on Aginode or be treated as constituting a representation on the part of Aginode.